



FLORIDA DEPARTMENT OF TRANSPORTATION TRAFFIC SHIFT INFORMATION

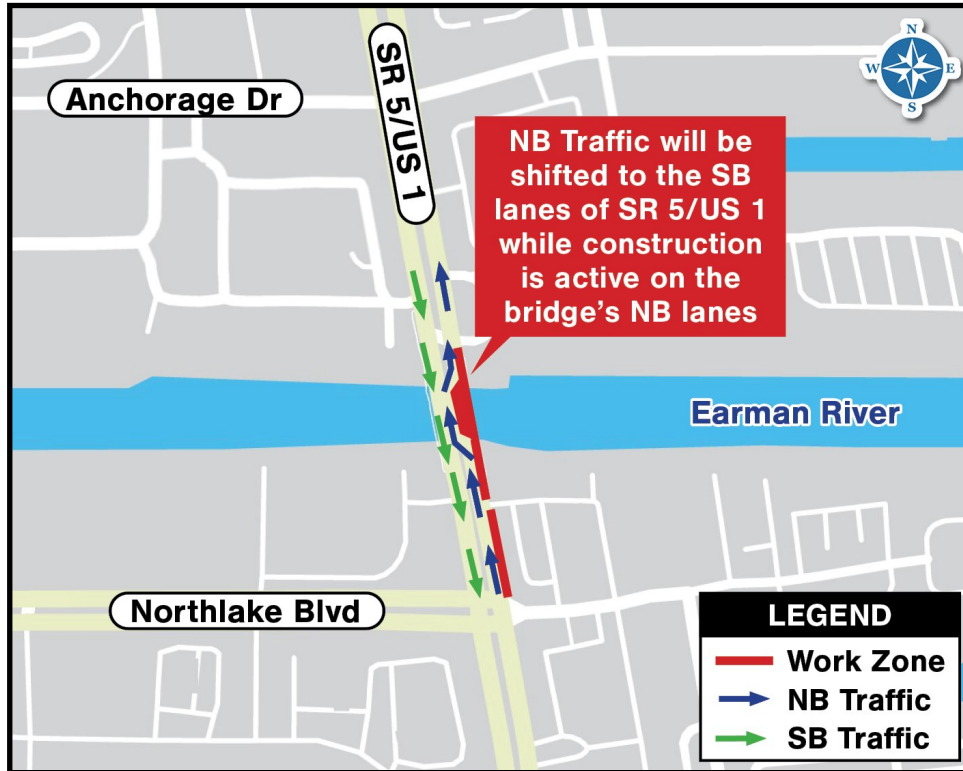
State Road (SR) 5/US 1 Earman River Bridge Replacement Project
From the intersection of SR 5/US 1 and Northlake Boulevard to just north of the
SR 5/US 1 and Anchorage Drive intersection
In the Village of North Palm Beach
Palm Beach County, FL
Financial Project Identification Numbers: 442891-2-52-01/02

TRAFFIC SHIFT ON NORTHBOUND SR 5/US 1 EARMAN RIVER BRIDGE SCHEDULED FROM APRIL 9, 2025, TO SPRING 2026

Emergency/First Responder access will be maintained and coordinated. Signage will be placed in the area to direct and alert all roadway users.

CONSTRUCTING THE EASTERN PART OF THE NEW BRIDGE

- Starting at 8:00 p.m. on Wednesday, April 9, northbound motorists traveling on SR 5/US 1/Earman River Bridge will be shifted to the existing southbound bridge to safely facilitate the construction of the new northbound portion of the bridge.
- Two travel lanes will be open in each direction on the remaining existing portion of the bridge.
- Pedestrian detours and signage will guide pedestrians to the sidewalk located on the southbound side of the bridge. Access to all businesses on the east side of SR 5/US 1 will remain open.



Construction Cost: \$13.6 million

Construction Start: February 2025

Estimated Completion: Summer 2027

PROJECT IMPROVEMENTS

- Replacing the SR 5/US 1 bridge over Earman River to improve safety, traffic flow, and long-term resiliency of the structure
- Widening the roadway to add a second right-turn lane from southbound SR 5/US 1 onto westbound Northlake Boulevard to improve infrastructure resilience, traffic flow and safety
- Milling and resurfacing the roadway along SR 5/US 1 within the project limits to enhance safety, ride quality and longevity of the infrastructure
- Adding 4-foot and 5-foot bicycle lanes along SR 5/US 1 within the project limits to improve safety for all roadway users
- Upgrading drainage, signage, lighting, signalization, pedestrian curb ramps, and pavement markings throughout the project limits to enhance infrastructure resilience, traffic flow, transportation efficiency and safety
- Upgrading the Intelligent Transportation System (ITS) to enhance transportation efficiency and safety
- Installing benches and planters throughout the project limits for the Village of North Palm Beach to enhance public spaces

CONTACT INFORMATION

Joel Jara, P.E. — FDOT Project Manager
joel.jara@dot.state.fl.us or (561) 978-5084

Al Banz, P.E. — Senior Project Engineer
abanz@pinnaclecei.com or (305) 773-5183

Silvana Ojeda — Community Outreach Specialist
sojeda@corradino.com or (561) 905-0167

WEBSITE AND SOCIAL MEDIA

Instagram/X: @MyFDOT_SEFL

Facebook: @MyFDOTSEFL

Project website: www.d4fdot.com



FLORIDA DEPARTMENT OF TRANSPORTATION MISSION STATEMENT

The Florida Department of Transportation's mission is to provide a safe statewide transportation system that promotes the efficient movement of people and goods, supports the state's economic competitiveness, prioritizes Florida's environment and natural resources, and preserves the quality of life and connectedness of the state's communities.

Please contact the Community Outreach Specialist, Silvana Ojeda, to be added to project email notification lists. **Para información y preguntas en Español, por favor llame al (954) 777-4302.**